



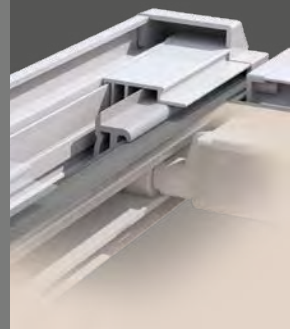
Rail system  
Glass roof awning



Portofino  
Roof-  
mounted

Just  
*enjoy life!*

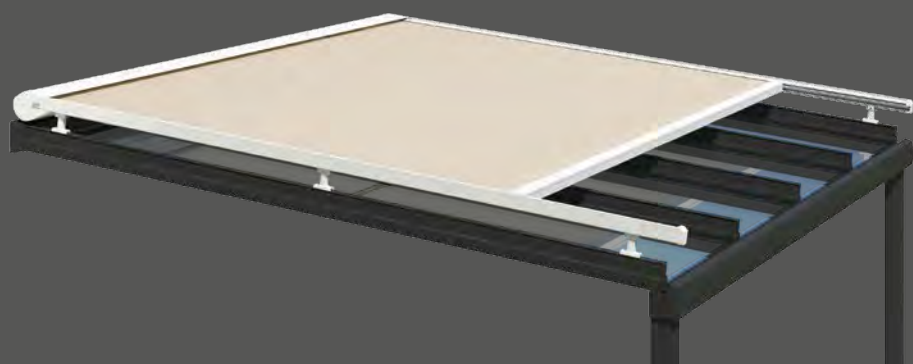
**Lewens**  
MARKISEN





## Portofino Type Roof-mounted

Zip awning for fitting on glass roofs and conservatories



### Roof mounting

*The Portofino Type Roof-mounted is attached from above to the rafters of a glass roof or conservatory using mounting feet. Thanks to the enclosed cassette, the awning fabric is protected against the weather when retracted.*

## Features

- Width, 1 unit max. 600 cm, double unit max. 1200 cm drop max. 500 cm
- Zip guide and patented balance spring technology
- Electric motor
- Comfort options: Radio motor/ radio remote control, automatic weather sensor, radiant heater



## Framed

On the **Portofino** roof-mounted awning, the guide tracks run along the sides of the fabric in the same plane as the awning. When this is extended, the tracks and front profile appear to create a frame around the awning. The zip guide keeps it under tension, ensuring the awning retains the perfect shape and position.

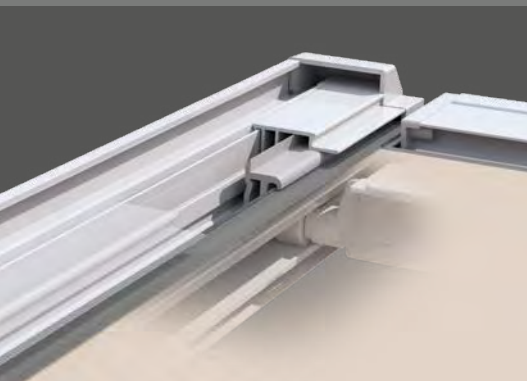


The Portofino roof-mounted awning provides unbroken shade from the sun with no intrusive lateral light gaps. The closed zip guide means that the awning is always perfectly tensioned. Adding the optional remote control feature permits the awning to be integrated into the home automation system. Sun, wind and rain sensors are also available for even greater convenience; the awning can be extended and retracted automatically even when no one is at home.

## Fabric guide

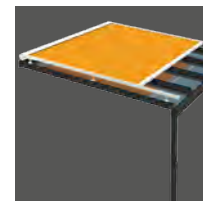
### ZIP

The track systems, which have received recognition with the GDA Aluminium Profile Award, are equipped with a zip guide and patented balance spring technology. These ensure a taut sit of the fabric, greater wind safety and complete shade from the sun.



# Portofino

Equipment and technical features



Manufactured and assembled  
in Germany



EN 13561

Quality and technology  
CE-compliant

Type	Roof mounting
Fabric guide	<b>ZIP</b>
System height (incl. standard attachment)	181 mm
<b>Unit widths (max.)</b>	
1 unit (single field)	600 cm
2-part (double unit: 2 cassettes, 2 motors, 4 guide rails)	1200 cm
<b>Drop (max.)</b>	
Depth (incl. cassette and pulley)	500 cm
<b>Drive</b>	
Electric motor (for wall switch)	<input checked="" type="checkbox"/>
Radio motor	<input type="checkbox"/>
<b>Frame colours</b>	
29 Lewens standard frame colours	<input checked="" type="checkbox"/>
Additional RAL, special colours and effect finishes	<input type="checkbox"/>
<b>Awning fabrics from the LEWENS collection</b>	
Branded acrylic (spun-dyed, ultra fade resistant)	<input checked="" type="checkbox"/>
Branded polyester/recycled polyester (spun-dyed, ultra fade resistant)	<input type="checkbox"/>
Tenara quality sewing yarn	<input checked="" type="checkbox"/>
<b>Options</b>	
1   Radio motor + radio remote control	<input type="checkbox"/>
2   Automatic weather sensor (sund,wind, rain)	<input type="checkbox"/>
3   Radiant heater (only wall attachment)	<input type="checkbox"/>
<b>Attachment</b>	
Roof mounting	<input checked="" type="checkbox"/>
<b>Attachment materials</b>	
Size 10 mounting feet (without mounting screws/plugs)	<input checked="" type="checkbox"/>
additional/other attachment materials	<input type="checkbox"/>
<b>Note</b>	
Due to the design and the weight of the awning fabric, the fabric may sag in the middle on large awning sizes. However, this has no effect on the operation and / or service life of the awning.	

■ Standard   □ Option

Possible dimensions and restrictions along with the complete range of electronic accessories can be found in the technical data in the current Lewens price list.

**Lewens**  
MARKISEN



www.lewens-markisen.de

Your stockist will be happy to advise you:

---

Subject to technical alterations. Date: 08/2023